



LOCKE & ENGLAND
AUCTIONEERS & VALUERS

JULY SALE OF

**SELECTED ANTIQUE FURNITURE
& COLLECTORS' ITEMS,
JEWELLERY & WATCHES**

VIEWING

Saturday 21st July
10.00 am - 2.00 pm

Tuesday 24th July
9.00 am - 5.00 pm

Wednesday 25th July
9.00 am - 7.00 pm

Morning of the sale
from 9.00 am

AUCTION

**Antique Furniture &
Collectors' Items**

Thursday 26th July 2018
Commencing at 11.00 am

Jewellery & Watches

Thursday 26th July 2018
Commencing at 3.00 pm

Leamington Spa Auction Centre

CATALOGUES

£5 by post,
online at www.leauction.co.uk

LIVE INTERNET BIDDING

Live internet bidding available via

the saleroom
The home of art & antiques auctions

JEWELLERY & WATCHES



JEWELLERY & WATCHES



Lot 500

500

A gentleman's yellow metal diamond and sapphire ring. Approx weight 8.2g *£150 - £200*

501

A gentleman's 9ct gold signet ring with square panel. Approx weight 7g *£60 - £80*

502

A gentleman's 9ct gold signet ring with oval panel and engraved decoration. Approx weight 9g *£80 - £120*

504

An 18ct yellow gold diamond solitaire ring, 0.5ct stone in an eight claw setting. Approx weight 3g. *£200 - £300*

505

A 22ct gold wedding band together with a 9ct gold diamond and sapphire trilogy ring A/F. Approx weights 4.4g & 2.2g. *£120 - £160*

506

A late Victorian 18ct yellow gold four stone diamond ring. Approx weight 3.1g *£80 - £120*



Lot 507

507

An 18ct yellow gold and platinum diamond solitaire ring. Centre stone approximately 0.5ct. Approx weight 2.5g. *£200 - £300*

508

A yellow metal illusion set solitaire ring together with a 9ct gold green and white stone ring and a 9ct gold spinel eternity ring Approx weight 6.9g *£80 - £120*

509

An 18ct yellow gold and platinum highlighted ring set single diamond in an illusion setting, ring size O 1/2, 2.5 gms *£50 - £80*

510

An 18ct yellow gold blue topaz ring set with two stones totaling approximately 2cts, together with an 18ct white gold diamond solitaire ring. Approx weight 5.4g *£200 - £300*



503

An 18ct yellow gold diamond cluster ring with a flower head setting, together with a matching yellow metal diamond pendant. Approx weight 7.7g. *£200 - £300*



Lot 504



Lot 510

511

A group of five rings, two being 22ct, two 9ct and one silver. Total weight approx 8.5g
£80 - £120

512

An 18ct yellow gold ring set five graduated diamonds in a marquise shaped setting, 3.4 gms
£70 - £100

513

A gentleman's 22ct gold wedding band. Approx weight 8.2g.
£180 - £220

514

A 9ct gold aquamarine bangle set with five oval cut stones, interspersed by clear stones. Approx weight 6.9g
£70 - £100

515

A 9ct gold opal style ring together with a similar yellow metal opal style tennis bracelet. Approx weight 12.3g
£80 - £120

516

A 9ct yellow gold five bar bracelet with heart shaped padlock clasp, 18.7 gms, together with a 9ct yellow gold ring set two pearls in a crossover setting (2)
£180 - £220

517

A 9ct gold bangle with engraved decoration, together with three various 9ct gold bracelets and a 9ct gold curb link necklace. Approx weight 30.8g
£300 - £500

518

A 9ct gold jade bracelet together with a 9ct gold Art Nouveau pendant on a yellow metal chain and a yellow metal garnet brooch. Approx weight 21.4g
£200 - £300

519

A parcel of mixed jewellery to include 9ct gold cased watch, yellow metal diamond and ruby ring, 9ct gold music note bar brooch and yellow metal bar brooch in original box. (5) *£70 - £100*



520

A yellow metal pendant having a floral relief to front and glazed panel to back, together with a 9ct gold carved shell cameo and bar brooch. Approx weight 14.2g
£100 - £150

521

A yellow metal amethyst and seed pearl ring together with similar brooch and a 9ct gold amethyst and seed pendant.
£50 - £80

522

Two pairs of 9ct gold engraved cuff links together with a boxed 18ct gold collar stud set. Approx total weight 19.2g
£220 - £280



Lot 518



Lot 523

523

A 9ct gold charm bracelet having 12 charms.
Approx weight 63.7g *£550 - £700*

524

A parcel of assorted 9ct gold and other jewellery to include; rotary watch, cuff links, lockets, chain etc. Total approx weight 53.7g *£400 - £600*

526

A pair of two colour metal ear studs, each set a single brilliant cut diamond within a millegrain setting and suspending a detachable grey pearl drop, diamonds each approximately 1 carat, pearls measure d. 1.1 cm, overall 9.3 gms

£3000 - £5000

527

A 9ct yellow gold bar brooch set red coloured stone and seed pearls in an openwork setting, w. 4.5 cm *£20 - £40*



528

A pair of 9ct gold cuff links with engraved Masonic symbols. Approx weight 5.6g.

£50 - £80



Lot 525

525

A 9ct yellow gold 'hole in one' brooch set pearl, l. 3.9 cm, 6 gms, together with a similar example (2) *£60 - £80*

529

An Edwardian-style 9ct yellow gold brooch of oval openwork form centrally set with a pale blue topaz and seed pearls, w. 3.8 cm, 4.1 gms

£50 - £80



Lot 530

530

A 1962 sovereign in a 9ct gold mount. Total weight approx 12g *£200 - £250*



Lot 526

531

A single strand continuous cultured pearl necklace, l. 78 cm
 £30 - £50



Lot 532

532

A Hans Hanson of Denmark silver modernist bracelet of square form together with a pair of Bent Knudsen silver drop earrings £100 - £150



Lot 533

533

A yellow metal blue topaz and diamond ring marked 750. Approx weight 5.3g £80 - £120

534

An early 20th century yellow metal garnet bar brooch. Approx weight 1.9g £20 - £30

535

Spare Lot

536

A Chinese jade bracelet having four curved jade pieces, mounted in rolled gold £40 - £60



Lot 537

537

A yellow metal amethyst flower brooch, set with seven clusters of five stones. Approx weight 8.6g £250 - £300

538

A Victorian 18ct gold blue stone ring set with five graduating old cut stones interspersed with small white stones. £100 - £150

539

A Victorian 9ct gold stick pin with baton twist design in fitted box. Approx weight 1.2g £20 - £30

540

An assortment of 9ct gold items to include a diamond ring, wedding band, rope twist bracelet, locket, earrings etc. Approx weight 13.3g £100 - £150

541

A Waltham gold plated open face pocket watch together with a 9ct gold Albert chain and Masonic fob. Albert weight approx 37.3g.

£350 - £450



542

A 9ct gold open faced pocket watch with 9ct gold fancy link Albert chain and yellow metal eagle fob. Total weight 121.8g

£400 - £600



543

A gentleman's stainless steel cased wristwatch by Omega, the circular dial with baton numerals on an expanding bracelet strap, with case and papers

£100 - £150



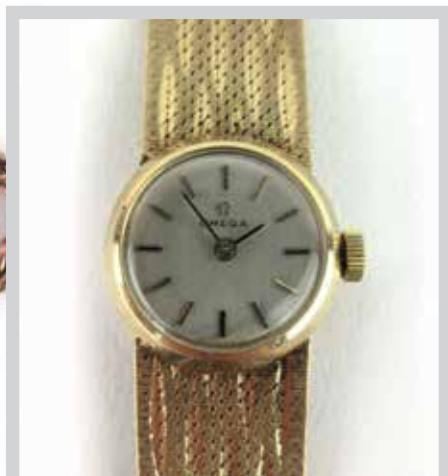
Lot 541



Lot 542

Lot 543





544

A 9ct gold ladies Omega bracelet watch, having a signed dial, crown and buckle and textured strap. Total weight approx 26g

£200 - £300

545

A ladies Accurist silver hallmarked mechanical bracelet watch with textured finish £60 - £80

546

A Chinese white metal mounted jade bangle together with a Chinese jade bracelet having oval cabochon jade panels mounted in silver.

£80 - £120



Lot 547

547

A white metal Art Deco full eternity diamond ring with channel set diamonds and sapphires. Approx weight 2.5g

£350 - £400

548

A Victorian 22ct gold wedding band, hallmarked for London 1875. Approx weight 5.4g

£150 - £200



Lot 549

549

An 18ct gold and black enamel mourning ring set with three old cut diamonds. Approx weight 4.4g

£350 - £400

550

A Smythson of Bond street green leather jewellery box having a textured finish and two lift out drawers containing an assortment of compartments. W. 28 cm

£80 - £120

551

A 9ct gold twisted link chain suspending a 9ct gold blue topaz and diamond pendant. Approx weight 2.25g

£40 - £60

552

A group of three rings consisting of an 18ct white gold diamond solitaire ring, an 18ct yellow gold diamond and sapphire flower head cluster ring and a yellow metal sapphire and diamond cluster ring. Approx weight 8.3g

£180 - £220

553

A 14ct white gold snakelink necklace suspending a pendant set teardrop shaped diamond, overall 5.1 gms

£300 - £400

554

A 9ct yellow gold cluster ring set oval smoky quartz within a border of clear stones, ring size L, 4.7 gms

£30 - £50

555

A 9ct yellow gold ring set sapphire and six small diamonds in a flowerhead setting, ring size O 1/2, 2.2 gms

£30 - £40

556

A 9ct yellow gold ring set oval citrine in a six claw setting, ring size N, 7.1 gms

£60 - £100

557

A 9ct yellow gold ring set small emerald and diamonds in a flowerhead setting, ring size T, 2.7 gms

£40 - £60

558

A 9ct yellow gold signet ring set oval black onyx, ring size S, 3 gms *£40 - £60*

559

A 9ct yellow gold ring of wishbone form set small diamonds, ring size K 1/2, 0.9 gms *£20 - £30*

560

A single strand baroque pearl necklace with yellow metal clasp stamped '750', pearls approximately d. 8 mm, l. 42 cm *£100 - £150*

561

A 9ct yellow gold ring set five graduated opals in a raised setting, ring size N, 3.4 gms, *£150 - £200*



Lot 562

562

An 18ct white gold three stone ring set cushion cut (?) rubellite and two brilliant cut diamonds in a raised setting, central stone measures 1.1 x 1.2 cm, each diamond approximately 0.5 carats, ring size L, 7.8 gms *£1200 - £1500*

563

A 9ct yellow gold and platinum highlighted ring set small diamonds in an illusion setting, ring size N, 1.7 gms *£60 - £100*

564

A pair of 9ct yellow gold ear pendants of leaf design and set small diamonds, together with a matching pendant, 3.7 gms (3) *£40 - £60*



Lot 564

565

A 9ct yellow gold ring set three graduated oval cut tourmaline interspersed with four small diamonds, ring size R, 2.6 gms *£60 - £100*



Lot 566

566

An 18ct yellow gold ring set baguette cut diamond in a four claw setting, ring size T, 2.9 gms *£300 - £400*

567

A pair of 9ct white gold ear studs set small diamonds, a pair of silver ear pendants set pearls and two further pairs of silver ear studs (4 pairs) *£30 - £40*



Lot 568

568

A 14ct yellow gold ring set princess cut diamond in a raised four claw setting, ring size L, 1.9 gms *£500 - £700*

569

A three strand continuous cultured pearl necklace with a 9ct white gold clasp set small diamonds in a flowerhead setting, l. 58 cm *£80 - £120*



Lot 560



Lot 570

570

A set of three 14ct yellow gold rings of wave design set small diamonds, emeralds, sapphires and rubies, ring size M 1/2, 4.1 gms £80 - £120

573

A 9ct yellow gold signet ring set faux coin, ring size O 1/2, 2 gms £40 - £60



Lot 574

574

An 18ct white gold ring set three princess cut diamonds in a square shaped setting, ring size K, 4.5 gms (af) £800 - £1000



Lot 571

571

A yellow metal pendant/brooch of heart shaped form set centrally with an amethyst, w. 3 cm, together with a metalware bracelet set tanzanite coloured stones (2) £100 - £150



Lot 575

575

An 18ct white gold ring set baguette and brilliant cut diamonds in a cluster setting, the shoulders also set further diamonds, ring size N 1/2, 3.6 gms (af) £250 - £300

576

An 18ct yellow gold ring set single princess cut diamond in a four claw setting, stone approximately 0.26 carats, ring size K, 3 gms £150 - £200



572

An 18ct yellow gold ring set three brilliant cut diamonds each in a four claw setting, central stone approximately 0.7 carats, ring size L, 3.5 gms *the central stone has been applied with a film to give the appearance of a red stone £4000 - £5000



Lot 577

577

A late 19th/early 20th century yellow metal ring set three cushion cut diamonds and two rubies interspersed with eight small diamonds in a scrollwork setting, ring size N, 4 gms £400 - £600

578

A yellow metal brooch in the form of a bunch of grapes set rubies and diamonds, w. 2.5 cm, 4.5 gms *£80 - £120*

579

A 19th century yellow metal mounted cameo brooch of oval form centrally carved with two classical figures drinking by a well, overall 7 x 6 cm *£80 - £120*

580

A silver filigree work bracelet set four oval green roundel's *£40 - £60*

581

A 9ct yellow gold propelling cigar pricker of horn shaped form, maker EB, I. including suspending loop 8.1 cm, overall 12.2 gms *£80 - £120*

582

A gold plated open face pocket watch by Waltham, the white enamel dial with black Roman numerals and second hand section within a plain case, dial measures 4.1 cm *£30 - £40*

583

An early 20th century Continental silver cased open faced pocket watch and three base metal cased pocket watches by Ingersoll and others (4) *£50 - £80*

584

A ladies gold plated wristwatch by Rotary, the rectangular dial with gold coloured baton numerals on an openwork bracelet strap, dial w. 8 mm, cased *£20 - £30*

585

A gentleman's 9ct yellow gold automatic wristwatch by Omega, the circular dial with gold coloured baton numerals and date aperture on a black leather strap, dial d. 2.8 cm *£300 - £400*

586

Three ladies early 20th century part gold wristwatches *£80 - £120*



587

A ladies early 20th century 9ct yellow gold wristwatch by Rolex, the circular dial with Arabic numerals and second hand section on an articulated bracelet strap, dial d. 2.2 cm *£200 - £300*

588

A ladies 9ct yellow gold wristwatch by Tissot, the oval dial with baton numerals on a curb link bracelet strap, dial l. 1.6 cm, 24 gms *£150 - £200*

589

A 9ct yellow gold ring set three cabochon diamonds interspersed with four small diamonds, together with a pair of similar cluster ear studs set paste (3) *£100 - £150*

590

A pale green jade bangle, internal d. 5.6 cm *£80 - £120*

591

A pale green jade bangle, internal d. 5.7 cm *£80 - £120*



Lot 585

592

A pale green jade bangle, internal d. 5.5 cm
£80 - £120

593

A green jade bangle, internal d. 5.6 cm
£80 - £120

594

A green jade bangle, internal d. 5.7 cm
£80 - £120

595

A green jade bangle, internal d. 5.8 cm
£80 - £120

596

A green jade bangle, internal d. 5.9 cm
£80 - £120

597

A green jade bangle, internal d. 5.9 cm
£80 - £120

598

A green jade bangle, internal d. 5.9 cm
£80 - £120

599

A green jade bangle, internal d. 5.6 cm
£80 - £120

600

A green jade bangle, internal d. 5.9 cm
£80 - £120



Lot 601

601

An amber jade bangle, internal d. 5.8 cm
£80 - £120

602

A George V full sovereign dated 1912
£180 - £220

603

A George V full sovereign dated 1913
£180 - £220



604

A Queen Victoria shield back full sovereign dated 1864
£200 - £250

Lot 604

605

A 14ct gold thimble with inset stone to top and Greek key design to body. Approx weight 3.7g
£70 - £100



Lot 605

606

A Heuer stop watch having central seconds and original label to back
£30 - £50

607

A continental 18ct gold fob watch, the yellow metal dial having Roman numerals and central engraving. Dia 3.8cm
£200 - £250

608

A yellow metal ring set with opals and diamonds in a scrollwork setting ring together with one other 9ct gold opal ring. Approx weight 5.3g
£70 - £100



Lot 606



Lot 609

609

An 18th century yellow metal garnet bow ring having the engraved inscription 'Gage De Mon Amitié' meaning 'A token of my friendship' to the outside of the shank. *£100 - £200*

610

An 18ct rose gold wedding band, hallmarked for Birmingham 1891. Approx weight 6.9g *£120 - £160*

611

A 22ct gold wedding band. Approx weight 5.6g. *£120 - £160*

612

A late Victorian yellow metal agate cabochon brooch. L. 4 cm. *£30 - £50*



Lot 613

613

A 19th century rolled gold micro mosaic heart brooch having glazed panel to back. *£40 - £60*

614

An Edwardian amethyst and seed pearl bar brooch marked 9ct. Approx weight 3.1g *£30 - £50*



Lot 615

615

A gentlemen's 9ct gold Masonic flip over ring with engraved initials on reverse. Approx weight 7.1g *£50 - £70*

616

A 9ct gold amethyst locket together with a 9ct gold amethyst pendant and three assorted 9ct gold ladies rings. Approx weight 15g *£150 - £200*

617

A group of six 9ct gold and yellow metal rings to include diamond and sapphire rings, child's ring etc. Approx weight 12.2g *£100 - £150*

618

A group of six 9ct gold and yellow metal rings to include garnet cluster ring, channel set diamond ring, malachite cabochon ring etc. Approx weight 13.1g *£100 - £150*



Lot 619

619

A 9ct gold diamond band ring with beaded edges. Approx weight 4.9g *£60 - £80*

620

Three pairs of 9ct gold and yellow metal hoop earrings together with a pair of 9ct gold stud earrings. Approx weight 6.1g *£60 - £80*

621

An assortment of 9ct gold and yellow metal jewellery to include garnet pendants and earrings, twist link bracelet, garnet ring etc. Approx weight 9.8g *£80 - £120*

622

An assortment of silver jewellery to include engraved bangles, gate link bracelet, locket etc together with three ladies watches including Rotary and Citizen. *£40 - £60*

623

A unisex stainless steel Constellation quartz wristwatch by Omega, the plain circular dial with baton numerals on an articulated bracelet strap, dial d. 2.9 cm *£50 - £80*

Lot 624

624

A ladies two colour stainless steel Oyster Perpetual Date wristwatch by Rolex, the circular gold coloured dial with baton numerals and date aperture on an articulated bracelet strap, dial d. 2.1 cm, boxed *£1500 - £2000*



Lot 623





Lot 625

625

An 18ct white gold 5 stone diamond ring having brilliant cut diamonds in a four claw setting. Approx total carat weight 2.00ct. £1200 - £1600

626

Two 9ct gold signet rings together with a 9ct gold flat link chain and a yellow metal cased ladies watch. £80 - £120

627

A Edward VII full sovereign dated 1908 in a 9ct gold mount. Approx weight 15.1g £200 - £250

628

A queen Victorian full sovereign dated 1908
£180 - £220



W&H PEACOCK
AUCTIONEERS & VALUERS

Established 1901

Auction Centre & Café
OPEN TO THE PUBLIC SIX DAYS A WEEK



The Auction Centre provides five spacious auction rooms, reception area, offices, meeting rooms, gallery display areas and a fully serviced restaurant, open six days a week. To further enhance the customer experience the Auction Centre has wifi and modern audio visual systems, over 200 parking spaces, excellent loading facilities and is set in landscaped surroundings.

Bedford Auction Centre, Eastcotts Park, Wallis Way, Bedford, Bedfordshire MK42 0PE
Tel: 01234 266366 | info@peacockauction.co.uk | www.peacockauction.co.uk

HAMMER PRICES - MAY 2018

1	£150	39	£80	82	£75	304	£150	413	£50	451	£70	518	£35
2	£230	41	£170	83	£30	305	£170	414	£40	452	£45	519	£160
3	£200	42	£300	84	£130	306	£85	415	£55	453	£26	520	£65
4	£190	43	£140	85	£30	307	£80	416	£80	454	£26	521	£130
5	£320	44	£85	86	£40	309	£140	417	£65	455	£75	522	£22
6	£120	45	£260	87	£120	310	£80	418	£70	456	£24	523	£22
7	£200	46	£40	156	£20	311	£40	419	£45	457	£65	524	£75
8	£60	47	£40	157	£30	312	£40	420	£120	460	£30	525	£20
9	£100	50	£280	158	£80	313	£150	422	£75	461	£30	526	£10
10	£200	51	£200	162	£170	315	£130	423	£40	464	£80	527	£50
11	£50	52	£180	165	£30	316	£440	424	£160	465	£60	528	£50
12	£90	53	£750	166	£130	317	£200	425	£140	466	£45	529	£30
13	£150	54	£80	171	£600	318	£50	426	£55	467	£65	530	£100
14	£190	55	£100	172	£220	319	£65	427	£90	468	£95	532	£20
15	£120	60	£150	174	£300	320	£28	428	£50	469	£40	535	£45
16	£220	61	£15	200	£4,000	321	£30	429	£190	470	£200	536	£40
17	£75	62	£160	202	£50	322	£220	430	£460	471	£75	537	£520
18	£160	63	£95	203	£28	323	£130	431	£150	472	£75	538	£70
19	£260	64	£40	204	£110	324	£130	432	£45	473	£1,000	539	£100
20	£1,400	65	£60	205	£70	325	£270	434	£180	474	£50	542	£50
21	£460	66	£100	206	£220	326	£95	435	£240	501	£40	543	£12
22	£60	67	£140	207	£65	327	£250	436	£230	502	£35	544	£30
23	£550	68	£40	208	£45	328	£140	437	£120	503	£70	545	£160
24	£65	69	£160	209	£65	329	£90	438	£140	504	£220	546	£24
25	£130	70	£120	211	£50	330	£300	439	£24	505	£75	547	£300
26	£340	71	£160	212	£75	331	£40	440	£65	506	£50	548	£35
27	£200	72	£110	213	£65	334	£270	441	£40	507	£10	549	£26
28	£200	73	£50	214	£35	335	£20	442	£40	508	£35	550	£10
30	£70	74	£65	215	£50	336	£20	443	£50	509	£10	551	£45
31	£120	75	£480	216	£90	341	£100	444	£24	510	£80	552	£65
32	£50	76	£10	217	£55	342	£160	445	£35	511	£50	553	£130
33	£700	77	£55	218	£30	343	£60	446	£24	512	£20	554	£18
34	£50	78	£110	300	£100	400	£60	447	£40	513	£55		
35	£85	79	£45	301	£35	410	£260	448	£35	515	£80		
37	£280	80	£45	302	£70	411	£15	449	£95	516	£140		
38	£1,900	81	£50	303	£40	412	£190	450	£45	517	£30		

Valuation Service

Should you require valuation advice or wish to consign items for our Fine Art Sales please contact us on 01926 889 100 or email us an image info@leauction.co.uk

www.leauction.co.uk





LOCKE & ENGLAND

AUCTIONEERS & VALUERS

Wednesday 29th August 12 to 4pm

Valuation Day

**of Antiques, Collectables,
Jewellery and Fine Art**

Our team of valuers are happy to advise on all Antique Furniture, Pictures, Ceramics & Glass, Silver, Metalware, Boxes and Caddies, Militaria, Books & Ephemera, Wine & Spirits, Collectable Toys, Mid Century Design, Watches & Jewellery and other Collector's Items, for which no appointment is necessary. For larger or multiple items, we are happy to arrange for a valuer to visit your home or premises at your convenience.

Auction Sale Entries Invited

Leamington Spa Auction Centre 12 Guy Street, Leamington Spa, CV32 4RT
01926 889 100 or valuers@leauction.co.uk

www.leauction.co.uk

ENTRIES NOW INVITED

For our next specialist auction of Antiques and Collectable's at the Leamington Spa Auction Centre

AUCTION Highlights



A 19th century painted pine food cupboard having two cupboard doors with spindles over two drawers above two paneled cupboard doors, h. 188 cm, w. 117 cm, d. 48 cm

Sold for £1400

Terms used in this catalogue have the following meanings.

Please note that all statements in this catalogue, regarding authorship, attribution, origin, date, age, provenance and condition are statements of opinion and are not treated as a statement of fact.

1. A N ARTIST

In our opinion, the work is by the artist.

2. ATTRIBUTED TO A N ARTIST

In our opinion, the work is of the period of the artist which may be whole or in part the work of the artist.

3. STUDIO, (CIRCLE OR WORKSHOP) OF A N ARTIST

In our opinion, the work is of the period and closely relates to his style.

4. SCHOOL OF A N ARTIST

In our opinion, the work is by a pupil or a follower of the artist.

5. MANNER OF A N ARTIST

In our opinion, the work is in the style of the artist and is of a later period.

6. AFTER A N ARTIST

In our opinion, this work is a copy of the artist.

7. ASCRIBED TO A N ARTIST

In our opinion, this work is not by the artist, however, previous scholarship has noted this to be a work by the artist.

8. SIGNED (OR DATED)

The work has a signature (or date) which is in our opinion is genuine.

9. BEARS SIGNATURE (OR DATE)

The work has a signature (or date) which in our opinion is not authentic.

W&H PEACOCK
AUCTIONEERS & VALUERS

TO BE SOLD BY AUCTION

Thursday 27th September
Architectural Salvage and Bygones

Commencing at 10.30am



A specialist sale to include subject to delivery Agricultural Bygones, Vintage Memorabilia, Automobilia, Architectural Salvage and Horticultural and many other vintage items

Viewing: Wednesday 26th September 9am to 8pm and morning of sale from 9am

AUCTION ENTRIES INVITED

St Neots Auction Centre

75 New Street, St Neots, Cambridgeshire PE19 1AJ

01480 474 550 or sn@peacockauction.co.uk

www.peacockauction.co.uk

W&H PEACOCK
AUCTIONEERS & VALUERS

TO BE SOLD BY AUCTION

Thursday 23rd August
Mid Century Design

Commencing at 10.30am



This is a specialist sale of Mid Century classic designed furniture and collectables. These auctions have proved to be very popular with specialist buyers and private individuals looking for something out of the ordinary to furnish their home.

Viewing: Wednesday 22nd August 9am to 8pm and morning of sale from 9am

AUCTION ENTRIES INVITED

St Neots Auction Centre

75 New Street, St Neots, Cambridgeshire PE19 1AJ
01480 474 550 or design@peacockauction.co.uk

www.peacockauction.co.uk

Notes
