



LOCKE & ENGLAND

AUCTIONEERS & VALUERS

MAY SALE OF
*Antique Furniture & Collectors' items,
Jewellery, Coins and Watches*

VIEWING

Antique Furniture & Collectors' items,

Saturday 22nd May – 10am - 2pm

Tuesday 25th May – 9am - 5pm

Wednesday 26th May – 9am to 7pm,

Morning of sale from 9am

Viewing for this sale is available with restrictions.

A limited number of people will be permitted in the salerooms at any one time and strict social distancing measures will be in place.

All customers must wear a face covering.

Please note this sale will be held live on the internet.

Whilst you can view as detailed above, we cannot allow bidding in person on the day*.

*These conditions are subject to change and dependent upon Government guidance.

AUCTION

Antique Furniture & Collectors' items,

Thursday 27th May 2021 Commencing at 11.00am

Jewellery, Coins and Watches

Thursday 27th May 2021 Commencing at 3.00pm

LIVE INTERNET BIDDING



CATALOGUES

£5 by post, online at

www.leauction.co.uk

ENTRIES NOW INVITED

For our next specialist auction of Antiques and Collectable's at the Leamington Spa Auction Centre

Recent Highlights

Cartier, an 18ct yellow gold 'open and shut' en tremblant flower clip, the closed bud opening to reveal diamond, sapphire, ruby and emerald set stamens. Signed and indistinctly numbered (?)016637, cased. Approx weight 33.7g, l. 7 cm

Hammer Price £4,800



Terms used in this catalogue have the following meanings.

Please note that all statements in this catalogue, regarding authorship, attribution, origin, date, age, provenance and condition are statements of opinion and are not treated as a statement of fact.

- 1. A N ARTIST**
In our opinion, the work is by the artist.
- 2. ATTRIBUTED TO A N ARTIST**
In our opinion, the work is of the period of the artist which may be whole or in part the work of the artist.
- 3. STUDIO, (CIRCLE OR WORKSHOP) OF A N ARTIST**
In our opinion, the work is of the period and closely relates to his style.
- 4. SCHOOL OF A N ARTIST**
In our opinion, the work is by a pupil or a follower of the artist.
- 5. MANNER OF A N ARTIST**
In our opinion, the work is in the style of the artist and is of a later period.
- 6. AFTER A N ARTIST**
In our opinion, this work is a copy of the artist.
- 7. ASCRIBED TO A N ARTIST**
In our opinion, this work is not by the artist, however, previous scholarship has noted this to be a work by the artist.
- 8. SIGNED (OR DATED)**
The work has a signature (or date) which is in our opinion is genuine.
- 9. BEARS SIGNATURE (OR DATE)**
The work has a signature (or date) which in our opinion is not authentic.



A George II walnut 'Gainsborough' chair upholstered in floral needlework fabric, the outswep arms with floral carving on cabriole legs with carved ears and knees on hairy paw feet, h. 96 cm, w. 77 cm, d. 80 cm

Hammer Price £29,000

*Jewellery
& Watches*



Jewellery & Watches



500

A late 20th century Russian yellow metal signet ring stamped '583'. Size U. Approx weight 13g £220 - £280

501

A 9ct gold wedding band together with a 9ct gold signet ring and tie clip. Approx weight 15.6g £180 - £220

502

A 9ct gold emerald and diamond cluster ring together with a similar 9ct gold emerald and diamond six stone ring. Approx weight 5.7g £80 - £120

503

A 9ct gold diamond solitaire ring, the small stone in a stylized crossover setting, together with a yellow metal diamond ring marked '9k' having a pierced design and a 9ct gold cameo ring. Approx weight 7.4g £80 - £120

504

A 9ct white gold, sapphire and white stone eternity ring together two other 9ct gold and white stone eternity rings. Approx weight 11.7g £120 - £160

505

A 9ct gold signet ring together with a 9ct gold wedding band. Approx weight 4.6g £50 - £80



Lot 506

506

A Victorian and later yellow metal, diamond and blue stone ring, the old cut diamonds in a star shaped setting against a background of channel set stones. Approx weight 3.7g. Size L 1/2 £300 - £500

507

In the manner of Joseph Marchak, a 1970's 18ct yellow gold prunt ring set with cabochon turquoise and ten small diamonds within a naturalistic setting. Approx weight 17.7g Size K. £900 - £1,200



Lot 507



Lot 508

508

A yellow and white metal, ruby and diamond cluster ring marked '18k silver'. The approximately 2.4ct of rubies in a flower head setting with approximately 0.29ct of rose cut diamonds to shank. Approx weight 12.6g. Size J 1/2 £100 - £200



Lot 504

509

A white metal dress ring set with a blue coloured stone. Approx weight 4.2g. Size M. A/F *£200 - £300*



510

An assortment of 9ct gold chains to include a rope twist example, tri-gold flat link chain, curb chain, box chain etc. Approx weight 39.4g *£450 - £550*

511

A 9ct gold fancy link chain having Byzantine type links divided by flat cylindrical sections. Approx weight 10.7g *£140 - £180*



Lot 512

512

A collection of five late 19th/early 20th century 9ct gold and yellow metal brooches. Approx weight 12.6g *£140 - £180*



Lot 513

513

A late Victorian yellow metal, turquoise and seed pearl star and crescent brooch marked '15'. Approx weight 3.8g, l. 41 mm *£120 - £180*

514

A collection of six late 19th/early 20th century 9ct gold and yellow metal brooches to include a seed pearl and peridot example, an opal bar brooch etc. Approx weight 18.4g *£220 - £280*

515

A 9ct tri-gold curb chain together with one other 9ct gold curb chain and a 9ct gold flat link chain. Approx weight 37.6g *£450 - £550*

516

A 9ct gold rope twist chain together with a 9ct gold belcher chain and two other 9ct chains. Approx weight 41.7g *£480 - £550*

517

A 9ct gold twist design bangle. Approx weight 9.4g. *£120 - £150*



518

An Austrian white metal and black enamelled fob watch in the form of a handbag, l. 62 mm *£100 - £200*



Lot 517



Lot 519

522

A Waltham gold plated full hunter pocket watch, the dial having Roman numerals, dia. 50 mm

£30 - £50

523

A white metal open face pocket watch, the dial inscribed 'Exhibition Prize Medal 1862', dia. 48 mm

£50 - £80

519

An early 20th century yellow metal fob watch marked '0750', the enamel dial signed 'J.G. Marenzeller, Nachfolger, Wien'. Mounted in a leather wrist strap

£150 - £250

520

An early 20th century silver double Albert chain/necklace having three fobs. Various hallmarks. Approx weight 68g

£60 - £80



521

A George III pair cased gilt metal verge fusee pocket watch, the movement signed 'Thos Glsaco(?) Dublin'. Together with a base metal Albert chain and fob, dia. 45 mm

£100 - £150



Lot 524

524

An early 20th century nickel plated open face goliath pocket watch, the dial with Roman/ Arabic numerals and a seconds sub dial, dia. 65 mm *£80 - £120*

525

A mid-20th century chrome plated Goodwin stopwatch with an outer leather case together with an early 20th century pedometer in a nickel plated case. *£30 - £50*

526

Two continental white metal fob watches, the dials with Roman numerals and seconds sub dials, together with one miniature white and yellow metal fob watch, the dial with Arabic numerals and gilt decoration, max dia. 42 mm *£50 - £80*

527

A group of four nickel plated/base metal pocket watches to include a half hunter and two examples with red twenty four hour markers, max dia. 51 mm *£40 - £60*



Lot 528

528

An early 20th century Waltham gold plated open face pocket watch, the dial with red and black Arabic numerals, dia. 47 mm *£30 - £50*

529

A white metal cased military type screw front pocket watch having a black dial with luminous numerals and hands, dia. 45 mm *£70 - £100*

530

A late 19th century white metal cased fob watch having an engraved white metal dial with Roman numerals, together with two other continental silver fob watches having gilt decorated dials and engraved cases, max dia. 41 mm *£50 - £80*

531

An early 20th century Louis Roskopf S.A Patent railway pocket watch, the dial with stylized Arabic numerals, seconds sub dial and gilt hands, the nickel plated case decorated with a steam train on the reverse, dia. 46 mm *£40 - £60*

532

An early 20th century Hebdomas pocket watch, the dial with gilt decoration and visible escapement in a gun metal case, dia. 45 mm *£80 - £120*

533

A 19th century white metal open faced pocket watch, the white metal dial with Roman numerals and yellow metal floral relief decoration. The case marked 'Fine silver', dia. 50 mm *£80 - £120*



Lot 532



Lot 533



Lot 534

534

An Edwardian open face pocket watch, the dial signed 'The Veracity, Masters Ltd, Rye. 6 Prize Medals'. Hallmarked for London (Import) 1908, dia. 51 mm *£40 - £60*

535

An early 20th century French gun metal goliath pocket watch, the dial signed 'Regulateur Depose' with raised purple guilloche enamel decoration and an image of horse and cart to centre, dia. 65 cm *£80 - £120*

536

An early 20th century continental white metal pocket watch, the dial with Arabic numerals and seconds sub dial, the case marked '0.800', together with one smaller white and yellow metal fob watch, max dia 49 mm *£30 - £50*

537

An oversized Elgin pocket watch together with a gold plated half hunter pocket watch and a base metal 'Superior Railway Timekeeper' pocket watch A/F *£40 - £60*

538

A silver half hunter pocket watch by J.W Benson together with a Victorian silver open face pocket watch with a fusee movement, dia. 50 mm A/F *£50 - £80*

539

An early 20th century gold plated open face pocket watch together with a gun metal open face pocket watch having a yellow metal cartouche to back, dia. 50 mm *£45 - £65*

540

An Edwardian silver open face pocket watch, the dial signed 'The Express English lever J.G Graves Sheffield, dia. 51 mm *£40 - £60*

541

An early 20th century gun metal cased pocket watch together with three smaller 19th/20th century gun metal cased fob watches, max dia. 49 mm *£30 - £50*

542

A small assortment of pocket watches, parts and wristwatches to include a military style watch, Ingersoll Yanke pocket watch, Ford & Galloway Ltd movement etc. *£40 - £60*



543

A ladies Gucci 1500L gold plated wristwatch together with box and associated paperwork £40 - £60

544

A gentleman's 9ct gold cased Smiths De Luxe presentation wristwatch having seconds sub dial and Arabic numerals to face £80 - £120

545

A continental silver fob watch on a white metal Albertina, together with a silver Albert chain and a silver ID bracelet £60 - £80



Lot 537



546

An 18th century silver pair cased verge fusee pocket watch having a painted enamel dial. The movement signed 'Jn Camden London 62844', the case hallmarked for London 1792. £120 - £180



Lot 544

548

A William IV silver pair cased verge fusee pocket watch. The movement signed T&W Stupling (?), Lichfield, the case hallmarked for London 1835, dia. 53mm £90 - £140



Lot 548

547

A yellow metal full hunter pocket watch by E.Howard & Co. Boston. The dial with seconds sub dial and Arabic/Roman numerals, the case with engraved floral decoration and vacant cartouche. Approx weight 138g, dia. 54 mm. £700 - £1,000



Lot 549

549

A 9ct gold cased half hunter pocket watch, the dial with Roman and Arabic numerals. Presentation inscription to the inside of the case. With fitted box. Approx weight 73g £280 - £350



550

A 9ct yellow and white gold hinged bangle together with a similar 9ct yellow and white gold bracelet. Approx weight 20.2g £240 - £320

Lot 550



Lot 557

551

A pair of 9ct white gold and diamond 'J' shaped earrings. Approx weight 3.9g £60 - £80

552

A 9ct gold flat link necklace together with one other 9ct gold necklace and a yellow metal box link chain. Approx weight 35.2g £400 - £600

553

A 9ct gold heavy gauge gate link bracelet. Together with three smaller 9ct gold gate link bracelets. Approx weight 43.1g £500 - £700

554

An assortment of 9ct gold and yellow metal jewellery to include fine chains, a bracelet, cameo pendant etc. Approx weight 28.2 £300 - £400

555

An assortment of 9ct gold and yellow metal earrings. Approx weight 21.8g £250 - £350

556

Three 9ct gold fancy link bracelets, one set with small diamonds. Approx weight 33.2g £400 - £600

557

Four 9ct gold engraved lockets, three having 9ct gold chains. Approx weight 31.3g £350 - £450

558

A selection of 9ct gold and yellow metal items to include a 9ct gold brooch, two 9ct gold set cameo brooches, a yellow metal horn pendant marked '18k' and a yellow metal stick pin marked '15ct'. Approx weight 17.6g
£120 - £180



Lot 561

561

A George V full sovereign dated 1911 in a 9ct gold mount. Approx weight 9.4g
£250 - £350

562

A selection of 9ct gold pendants to include tanzanite, smoky quartz, citrine, synthetic opal etc. Approx weight 28.7g
£400 - £600

559

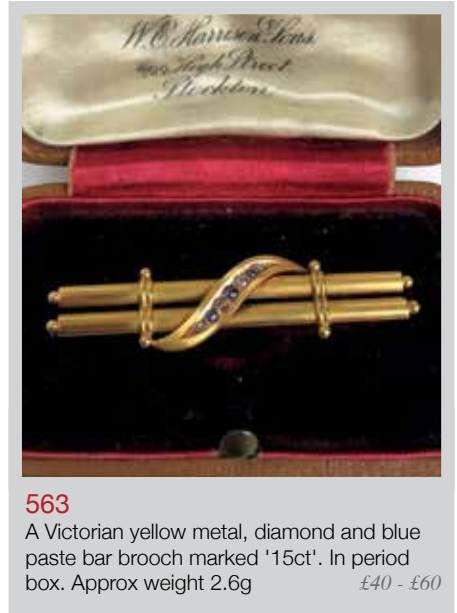
A selection of 9ct gold chains, bracelets and a small Albert chain. Approx weight 45.1g
£500 - £700



Lot 553

560

A group of four Edwardian yellow metal pendants marked '9ct'. Approx weight 7.8g
£100 - £200



563

A Victorian yellow metal, diamond and blue paste bar brooch marked '15ct'. In period box. Approx weight 2.6g
£40 - £60



564

Two yellow metal and enamelled clips having polychrome pierced floral decoration. Approx weight 23g, l. 7.5 cm £300 - £500



Lot 567



Lot 565

565

A large Victorian yellow metal mounted Wedgwood Jasperware cameo brooch depicting a chariot with lion and putti. Marked '9ct', w. 6.2 cm £150 - £250

569

An early 20th century yellow metal hinged bracelet set with a detachable horseshoe brooch comprising of thirteen old brilliant cut diamonds, central stone approximately 0.5ct. Approx weight 25g. Internal w. 5.5 cm. £3,500 - £4,500



Lot 569

566

A pair of white metal diamond stud earrings, diamond weight approx 0.2ct £100 - £150

567

A 9ct gold graduating double Albert chain with a bloodstone and carnelian spinner fob/watch key. Approx weight 43.3g, l. 40 cm £450 - £600

570

A 9ct gold rope twist chain together with a 9ct gold rope twist bracelet and a 9ct gold flat link bracelet. Approx weight 12.7g £150 - £200

568

A 9ct gold graduating single Albert chain. Hallmarked on every link. Approx weight 57g, l. 35 cm £650 - £850

571

An early 20th century yellow metal bar brooch set with five old cut diamonds. Total diamond weight approximately 1.5ct. Approx weight 3.5g, w. 5.7 cm £300 - £500



Lot 564





Lot 571

572

Four 19th century yellow metal stick pins to include two horseshoe examples, one coral stick pin and one other. Approx weight 10.5g

£100 - £150



Lot 575

575

Jean-Claude Champagnat for Mecan Elde, a yellow metal clip in the form of a sparrow, its eyes set with small rubies. Signed to tail feathers. Approx weight 27.1g, l. 6.9 cm

£900 - £1,200



573

In the manner of Joseph Marchak, a 1970's yellow metal pendant set with oval turquoise and twelve small diamonds in a cross-hatched setting. Approx weight 28.9g, l. 6.2 cm

£600 - £800



576

Two early 20th century yellow metal and seed pearl pendants. Approx weight 6.5g

£70 - £100

574

An Edwardian yellow metal, amethyst and seed pearl openwork pendant marked '9ct'. Suspended from a modern yellow metal chain marked '333'. Approx weight 7.3g

£100 - £150

577

An assortment of yellow metal items to include a red stone set locket on bow, a yellow metal and green stone stick pin marked '18', portrait pendant, stick pin etc. Approx weight 25.5g

£200 - £300

578

A late 19th century yellow metal stick pin, the engraved spherical top set with malachite, goldstone, and other stones. Approx weight 6g, l. 8 cm *£100 - £150*

579

An assortment of silver and white metal jewellery to include bracelets, lockets, ring, ingot pendant, charm bracelet etc. Approx weight 262.1g *£150 - £200*

580

A George V half sovereign dated 1915, in a 9ct gold openwork mount. Approx weight 7.3g *£150 - £200*

581

A Queen Victoria full sovereign dated 1901 *£250 - £350*

582

An Edward VII half sovereign dated 1906 *£120 - £160*

583

A George V half sovereign dated 1912 *£120 - £160*

584

An early 20th century yellow metal, opal and diamond ring marked '18ct', the three fiery opals bordered by six small diamonds. Approx weight 4.4g, size R. *£180 - £250*



Lot 584

585

An early 20th century 18ct gold and ruby ring, the three stones in a gypsy type setting. Approx weight 3.3g. Size N *£80 - £120*

586

A yellow metal, peridot and seed pearl brooch together with a yellow metal, red stone and seed pearl brooch and a yellow metal chain. Approx weight 5g *£50 - £80*

587

A pair of white metal diamond drop earrings, diamond weight approx 0.1ct total. *£30 - £50*

588

A 11.07ct natural (treated) octagon cut tanzanite stone with certificate *£20 - £30*

589

A 10.62ct natural (treated) octagon cut tanzanite stone with certificate *£20 - £30*

590

A 11.27ct natural (treated) octagon cut tanzanite stone with certificate *£20 - £30*

591

A 8.92ct natural (treated) pear cut blue sapphire stone with certificate *£20 - £30*

592

A 10.77ct natural (treated) pear cut blue sapphire stone with certificate *£20 - £300*

593

A 10.57ct natural (treated) pear cut blue sapphire stone with certificate *£20 - £30*

594

A 10.67ct natural (treated) emerald cut emerald stone with certificate *£20 - £30*

595

A 10.92ct natural (treated) emerald cut emerald stone with certificate *££20 - £30*

596

A 10.62ct natural (treated) emerald cut emerald stone with certificate *£20 - £300*

597

A 10.48ct natural (treated) square cut ruby stone with certificate *£20 - £300*

598

A 10.73ct natural (treated) square cut ruby stone with certificate *£20 - £300*

599

A 8.41ct natural (treated) square cut ruby stone with certificate *£20 - £300*



Lot 603



600

A yellow metal fringe necklace marked '750' together with a yellow metal and blue topaz ring and a pair of matching yellow metal earrings marked '18k'. Approx weight 45g

£900 - £1200



601

A pair of yellow metal and red stone two-part earrings, the backs marked '750'. Approx weight 6.3g

£200 - £300

602

A modernist yellow metal and turquoise ring in the style of Andrew Grima. Approx weight 6g
Size M 1/2

£200 - £300

Lot 607



Lot 608

603

A yellow metal, ruby and pearl ring having an openwork setting, together with a pair of similar yellow metal earrings. Approx weight 8.9g

£250 - £350

604

An 18ct gold and diamond ring, the nine square cut stones in a stepped setting. Approx weight 4.8g. Size M

£250 - £350



Lot 604



Lot 605

605

A yellow metal, pearl and diamond ring, the central pearl bordered by six stones. Approx weight 5.7g. Size N

£150 - £250

606

A 9ct gold, diamond and ruby set ring together with a 9ct gold cameo brooch. Approx weight 13.2g

£90 - £140

607

A middle eastern yellow metal bracelet marked '750'. Approx weight 69.7g

£1700 - £2000

608

A yellow metal herringbone link necklace marked '750'. Approx weight 9.1g

£220 - £280

609

A yellow metal, blue topaz and white stone pendant marked '18k' on a yellow metal Byzantine link chain marked '750'. Approx weight 10.1g *£200 - £300*

610

A yellow metal and pearl brooch marked '750' together with a yellow metal and stone brooch engraved with Arabic script. Approx weight 19.3g *£180 - £250*

611

A Middle Eastern yellow metal, seed pearl and black stone brooch marked '22k'. Approx weight 8.9g *£240 - £300*



612

An assortment of 9ct gold and yellow metal items to include earrings, chains, pendants etc. Approx weight 64.1g *£500 - £800*



Lot 613

613

A large 19th century yellow metal mounted cameo of the Persian Sibyl, l. 7.5 cm. Approx weight 32g *£250 - £350*



Lot 614

614

A late 18th century yellow metal mounted miniature portrait pendant depicting two lovers amidst ruins. 4 cm x 5.5 cm *£180 - £250*



Lot 615

615

A 19th century yellow metal and pearl brooch together with 9ct gold Royal Army Medical Corps sweetheart brooch. Approx weight 15.4g *£180 - £250*

616

A yellow metal abacus bracelet marked '14k'. Approx weight 9.3g *£160 - £240*

617

A yellow metal part roller ball link necklace marked '9ct'. Approx weight 17.5g *£200 - £300*

Lot 612



618

A late Victorian yellow metal openwork and seed pearl set brooch marked '15ct'. Approx weight 5.5g

£120 - £180

619

A group of four 9ct gold and yellow metal rings to include a shield signet ring, a single pearl type ring and two others A/F. Approx weight 11.5g

£120 - £180

620

Three early 20th century 9ct gold and yellow metal wristwatches A/F. Approx weight 45.5g

£200 - £300

621

A ladies 9ct gold cased Omega mechanical wristwatch with integral strap A/F. Approx weight 19.2g

£160 - £240

622

Two 9ct gold engraved mourning locket together with a yellow metal portrait pendant marked '9ct', a 9ct gold spinner fob and two yellow metal brooches. Approx weight 45.3g

£250 - £350

623

An assortment of 9ct gold and yellow metal items to include cufflinks, brooch, guard chain etc. Approx weight 49.2g

480 - £600

HAMMER PRICES - JANUARY 2021

1	£200	22	£220	45	£65	67	£30	88	£100	109	£700	132	£170
2	£200	23	£190	46	£65	68	£800	89	£35	110	£1800	133	£300
3	£150	24	£320	47	£220	69	£30	90	£110	111	£2900	135	£150
4	£35	25	£550	48	£400	70	£220	91	£1000	112	£130	136	£170
5	£80	26	£280	49	£150	71	£200	92	£55	113	£750	137	£340
6	£65	27	£100	50	£85	72	£110	93	£280	114	£100	138	£85
7	£50	28	£180	51	£700	73	£160	94	£460	115	£160	139	£2400
8	£100	29	£110	52	£240	74	£190	95	£180	116	£100	140	£250
9	£50	30	£130	53	£140	75	£80	96	£300	117	£400	141	£360
10	£500	31	£110	55	£95	76	£130	97	£340	120	£110	142	£440
11	£700	32	£200	56	£130	77	£40	98	£200	121	£600	143	£950
12	£240	35	£30	57	£140	78	£220	99	£550	122	£440	144	£190
13	£140	36	£30	58	£150	79	£80	100	£260	123	£250	146	£700
14	£200	37	£55	59	£45	80	£50	101	£280	124	£800	147	£650
15	£130	38	£50	60	£750	81	£140	102	£650	125	£3900	158	£100
16	£30	39	£100	61	£340	82	£140	103	£600	126	£120	160	£200
17	£160	40	£100	62	£95	83	£1000	104	£200	127	£150	161	£120
18	£190	41	£85	63	£40	84	£45	105	£320	128	£29000	162	£150
19	£280	42	£190	64	£60	85	£300	105 ^A	£350	129	£1100	164	£240
20	£340	43	£100	65	£140	86	£165	107	£600	130	£150	165	£550
21	£160	44	£240	66	£200	87	£150	108	£160	131	£850	166	£70

167 £75	226 £45	300 £460	359 £1300	481 £320	534 £170	593 £180
168 £420	227 £40	301 £40	361 £120	482 £120	535 £520	594 £660
169 £95	228 £220	302 £200	362 £100	483 £300	536 £460	595 £150
170 £95	231 £45	304 £110	363 £320	484 £60	537 £140	597 £130
171 £105	232 £50	305 £150	400 £50	485 £300	538 £180	598 £300
172 £160	233 £55	306 £65	401 £180	486 £260	539 £460	599 £30
176 £50	234 £30	307 £260	403 £440	487 £65	540 £460	602 £26
177 £50	235 £240	308 £200	404 £105	488 £240	541 £150	604 £26
179 £80	236 £200	310 £110	405 £125	489 £45	542 £150	605 £65
180 £50	237 £200	311 £30	406 £190	490 £26	543 £190	608 £35
182 £340	238 £90	312 £100	407 £80	491 £50	544 £580	609 £60
183 £30	239 £120	313 £260	408 £50	492 £55	546 £90	610 £45
185 £85	240 £80	314 £280	409 £60	493 £75	547 £80	611 £95
186 £440	241 £105	315 £70	410 £210	494 £30	548 £140	612 £55
188 £170	243 £170	319 £240	411 £150	495 £40	549 £240	613 £85
189 £50	244 £240	322 £600	412 £70	497 £40	550 £130	614 £26
190 £35	245 £200	323 £400	414 £90	498 £130	551 £380	615 £65
191 £50	248 £110	324 £360	417 £110	499 £100	553 £240	616 £26
192 £50	249 £40	325 £480	419 £160	500 £100	554 £380	617 £90
193 £50	250 £80	326 £75	420 £185	501 £85	555 £520	618 £40
195 £500	251 £90	327 £320	421 £80	502 £100	556 £650	619 £160
196 £200	252 £60	328 £320	422 £170	503 £150	557 £400	620 £90
197 £420	253 £30	329 £130	424 £150	504 £1200	558 £160	621 £250
198 £200	254 £120	330 £380	425 £170	505 £300	559 £140	622 £130
199 £80	255 £60	331 £140	426 £80	506 £340	560 £50	623 £400
201 £70	256 £75	332 £280	427 £50	507 £380	561 £120	624 £400
202 £340	257 £50	333 £90	428 £45	508 £240	562 £360	625 £320
203 £250	258 £260	334 £85	429 £120	510 £500	563 £1000	626 £190
204 £320	259 £22	335 £40	430 £240	511 £280	564 £100	627 £320
205 £160	260 £200	336 £70	431 £130	512 £500	565 £850	628 £150
206 £350	261 £160	337 £50	432 £100	513 £300	566 £120	629 £130
207 £200	262 £60	338 £110	433 £1700	514 £85	567 £320	630 £340
208 £65	263 £35	339 £120	434 £200	515 £390	569 £180	631 £100
209 £90	264 £50	340 £100	435 £170	516 £180	570 £620	632 £270
210 £26	265 £70	341 £320	436 £150	517 £190	572 £260	633 £800
211 £130	267 £40	342 £80	467 £300	518 £360	573 £20	634 £420
212 £26	268 £240	343 £220	468 £320	519 £550	578 £240	635 £200
213 £110	269 £55	344 £120	469 £300	520 £1300	579 £4800	
214 £85	270 £45	345 £60	470 £650	521 £400	581 £240	
216 £50	271 £75	346 £400	471 £12	522 £170	582 £140	
217 £300	272 £65	350 £75	472 £1300	525 £220	583 £320	
218 £140	273 £85	351 £900	473 £120	526 £75	584 £120	
219 £180	274 £600	352 £220	474 £250	527 £260	585 £160	
220 £45	275 £95	353 £1700	475 £240	528 £110	586 £85	
221 £160	276 £40	354 £340	476 £350	529 £170	587 £100	
222 £170	277 £100	355 £720	477 £26	530 £85	589 £65	
223 £75	278 £320	356 £60	478 £350	531 £130	590 £290	
224 £40	279 £50	357 £150	479 £45	532 £95	591 £140	
225 £80	280 £140	358 £80	480 £95	533 £200	592 £150	