



LOCKE & ENGLAND

AUCTIONEERS & VALUERS

SEPTEMBER SALE OF
*Antique Furniture & Collectors' items,
Jewellery, Coins and Watches*

VIEWING

Antique Furniture & Collectors' items,

Saturday 25th September – 10am - 2pm

Tuesday 28th September – 9am - 5pm

Wednesday 29th September – 9am to 7pm,

Morning of sale from 9am

A limited number of people will be permitted in the salerooms at any one time and strict social distancing measures will be in place.

AUCTION

Antique Furniture & Collectors' items,

Thursday 30th September 2021 Commencing at 11.00am

Jewellery, Coins and Watches

Thursday 30th September 2021 Commencing at 3.00pm

LIVE INTERNET BIDDING



CATALOGUES

£5 by post, online at

www.leauction.co.uk

HAMMER PRICES - MAY 2021

1	£380	60	£65	121	£140	212	£65	331	£900	513	£120	576	£95
2	£420	61	£100	122	£45	213	£45	332	£750	514	£260	577	£200
3	£240	62	£120	123	£260	214	£50	333	£35	515	£500	578	£110
4	£110	63	£40	124	£300	215	£65	400	£320	516	£540	579	£130
5	£150	64	£30	151	£280	216	£100	401	£570	517	£150	580	£170
6	£260	65	£360	152	£440	217	£30	402	£240	518	£200	581	£300
7	£80	67	£95	153	£50	218	£100	403	£70	519	£380	582	£140
8	£80	68	£70	154	£200	219	£60	404	£70	520	£30	583	£150
9	£300	69	£340	155	£240	220	£28	405	£300	521	£100	584	£330
10	£1500	70	£100	156	£80	221	£16	406	£55	522	£35	585	£120
11	£50	71	£480	157	£90	222	£300	407	£180	523	£80	586	£65
12	£240	72	£50	158	£260	223	£550	408	£50	526	£40	587	£20
13	£85	73	£80	159	£85	224	£300	409	£130	529	£85	588	£35
15	£40	75	£200	160	£120	225	£50	410	£190	531	£30	589	£35
16	£150	76	£420	161	£95	226	£140	411	£245	534	£45	591	£20
17	£30	77	£280	163	£160	227	£240	412	£210	535	£80	592	£20
18	£50	78	£480	164	£440	228	£120	413	£432	536	£30	593	£20
19	£75	79	£50	165	£240	229	£130	414	£391	537	£30	594	£55
20	£40	80	£50	166	£100	231	£100	415	£115	538	£40	595	£40
21	£35	81	£240	167	£80	232	£30	416	£500	539	£45	596	£45
22	£220	82	£180	170	£100	233	£550	417	£50	540	£30	598	£30
23	£120	83	£170	171	£70	234	£550	418	£130	542	£30	599	£20
25	£1000	84	£65	172	£60	235	£950	419	£180	543	£44	600	£1150
26	£50	85	£180	173	£650	300	£20	420	£220	544	£102	601	£180
27	£45	86	£75	176	£90	301	£200	421	£340	545	£30	602	£150
30	£400	87	£30	177	£50	302	£650	422	£80	546	£170	603	£210
31	£40	89	£120	178	£60	303	£50	423	£12	547	£700	604	£320
32	£650	90	£160	179	£95	304	£110	424	£230	548	£95	605	£170
33	£900	91	£150	180	£400	305	£70	425	£60	549	£380	606	£100
34	£35	92	£150	182	£340	306	£110	426	£130	550	£270	607	£1800
36	£70	93	£80	183	£110	309	£140	427	£160	551	£80	608	£250
37	£70	95	£100	184	£120	310	£60	428	£102	552	£630	609	£250
38	£150	96	£1800	185	£3000	311	£200	429	£110	553	£550	610	£320
40	£100	97	£170	186	£100	312	£75	430	£50	554	£360	611	£250
41	£200	99	£100	187	£400	313	£150	431	£190	555	£275	612	£1100
42	£80	100	£130	188	£110	314	£90	432	£60	556	£422	613	£310
44	£80	101	£140	189	£150	315	£380	433	£80	557	£400	614	£270
45	£340	102	£150	190	£140	316	£65	434	£40	558	£160	615	£230
46	£30	103	£190	191	£45	317	£22	435	£70	559	£580	616	£120
47	£100	104	£85	193	£160	318	£24	436	£50	560	£220	617	£240
48	£80	105	£70	194	£160	319	£26	437	£100	561	£270	618	£140
49	£200	107	£70	201	£60	320	£60	500	£280	562	£320	619	£160
50	£250	109	£30	202	£24	321	£110	501	£200	563	£55	620	£320
51	£150	110	£75	203	£65	322	£26	502	£80	564	£550	621	£200
52	£22	112	£650	204	£55	323	£70	503	£90	565	£120	622	£410
53	£50	113	£80	205	£110	324	£50	504	£140	567	£580	623	£790
54	£190	114	£180	206	£110	325	£65	505	£61	568	£760		
55	£200	116	£800	207	£120	326	£50	507	£1500	570	£170		
56	£160	117	£50	208	£85	327	£70	509	£220	571	£300		
57	£320	118	£50	209	£70	328	£150	510	£501	572	£110		
58	£30	119	£30	210	£120	329	£320	511	£160	573	£620		
59	£85	120	£50	211	£60	330	£120	512	£170	574	£110		

*Jewellery
& Watches*



Jewellery & Watches

500

Two 9ct gold diamond and ruby rings together with an early 20th century 9ct gold, sapphire and pearl cluster ring. Approx weight 7g

£90 - £140

501

A yellow metal and diamond five stone ring marked '18ct' together with a white metal pierced band ring marked 'platinum'. Approx weights 1.3g & 3.2g

£80 - £120



Lot 502

502

An early 20th century white metal and old mine cut diamond solitaire engagement ring, the approximately 2ct stone in a eight claw setting with diamond set shoulders. UK size K 1/2

£1500 - £2000

503

A platinum, diamond and purple stone cluster ring, the central stone set in a border of eighteen small diamonds. Approx weight 4.4g. UK size K

£80 - £120



Lot 503

504

A 22ct gold signet ring having engraved panel. UK size R. Approx weight 4.3g

£120 - £180



Lot 504



Lot 505

505

A Victorian and later yellow metal, diamond and blue stone ring, the old cut diamonds in a star shaped setting against a background of channel set stones. Approx weight 3.7g. Size L 1/2

£150 - £250



Lot 506

506

A gentleman's 9ct gold and blue topaz ring. UK size T 1/2. Approx weight 4.8g

£60 - £80

507

A 9ct gold engraved signet ring together with a 22ct gold wedding band. Approx weights 6.5g & 2.9g

£160 - £220

508

A 9ct gold and diamond solitaire ring, the approximately 0.15ct stone in a basket setting with raised shoulders. UK size Q. Approx weight 2.4g

£50 - £80



Lot 509

509

A white metal and diamond half eternity ring, the nine stones in a channel setting. Total carat weight approximately 0.75ct. UK size M. Approx weight 4.1g

£200 - £300

510

A collection of five 9ct gold signet rings. Approx weight 21.4g

£250 - £350

511

A collection of seven 9ct gold engraved band rings. Approx weight 25.5g

£300 - £400

512

A collection of seven 9ct gold and yellow metal dress rings. Approx weight 16.4g

£200 - £300

513

A 9ct gold, amethyst and pearl openwork pendant on chain together with an Edwardian yellow metal and blue stone drop necklace marked '9ct'. Approx weight 6.8g *£100 - £150*



514

A 9ct gold rope twist necklace together with a 9ct gold rope twist bracelet. Approx weight 9.2g *£110 - £140*

Lot 513 (part)

515

A pair of white metal diamond stud earrings, diamond weight approx 0.2ct *£50 - £100*

516

A collection of four 9ct gold and yellow metal brooches to include a branch design brooch. Approx weight 9.3g *£90 - £140*

517

A Victorian yellow metal mounted cameo brooch depicting the Three Graces, together with one white metal cameo brooch and two loose cameos. Max l. 5 cm *£70 - £100*



Lot 518

518

A Victorian yellow metal mounted carved shell cameo depicting a religious scene, l. 5.8 cm. Approx weight 19.3g *£100 - £150*



519

A white metal, possible jadeite and diamond bar brooch. The oblong stone bordered by eighteen small diamonds. Approx weight 10.1g, l. 4.9 cm *£100 - £200*

520

Jean-Claude Champagnat for Mecan Elde, a yellow metal clip in the form of a sparrow, its eyes set with small rubies. Signed to tail feathers. Approx weight 27.1g, l. 6.9 cm *£600 - £800*



Lot 520

521

An early 20th century yellow metal hinged bracelet set with a detachable horseshoe brooch comprising of thirteen old brilliant cut diamonds, central stone approximately 0.5ct. Approx weight 25g. Internal w. 5.5 cm. *£3500 - £4500*

522

A yellow metal box link chain marked '750'. Approx weight 11.7g *£250 - £350*



Lot 521



523

A yellow metal bi-gold t-bar necklace marked '18ct'. Approx weight 11g

£280 - £350

524

A yellow metal and diamond pendant marked '14k' suspended from white metal chain marked 18k 750'. Approx weight 4.8g

£120 - £180



Lot 525

525

A late 19th century yellow metal, diamond and opal ring marked '18ct', the central oval cut opal flanked by four old cut diamonds. UK size Q. Approx weight 3.9g

£150 - £250

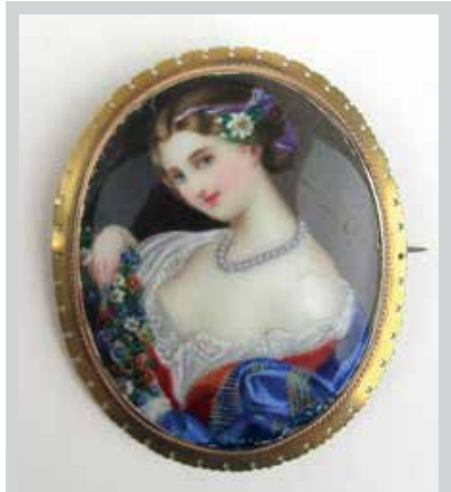


Lot 526

526

A pair of 9ct yellow gold openwork and ball design clip on earrings. Approx weight 5.1g

£70 - £100



527

A late 19th century yellow metal painted porcelain brooch depicting a young lady, l. 5.3 cm. Approx weight 13.3g

£100 - £150



Lot 528

528

An early 20th century 9ct gold carnelian and bloodstone spinner fob on a 9ct gold part Albert chain. Approx weight 18.2g

£80 - £120

529

An eastern yellow metal fancy link bracelet with safety chain. Approx weight 11.3g

£200 - £300



Lot 529

535

An assortment of 9ct gold and yellow metal items to include opal brooches, cravat ring, stick pin etc. Approx weight 19.9g *£250 - £350*

536

An 18ct gold textured band ring together with a yellow metal religious pendant. Approx weight 7.1g *£170 - £200*



530

A pair of white metal, emerald and diamond cluster earrings. Total diamond weight approximately 0.5ct. Dia. 10.3 mm

£200 - £300

531

A Victorian yellow metal faceted link double Albert chain marked '9c'. Approx weight 22.2g

£280 - £350

532

A yellow metal watch strap marked '9c' together with a yellow metal cased ladies Longines watch. Watch strap weight approx 4.6g

£80 - £120

533

An assortment of 9ct gold and yellow metal items to include two rings, a pair of earrings and a gilt metal seal fob. Approx weight (excluding fob) 6.6g

£80 - £120

534

A 9ct yellow and rose gold double link bracelet having a heart padlock clasp together with a selection of 9ct gold Albert chain links. Approx weight 41.65g

£500 - £600

537

An assortment of 9ct gold and yellow metal items to include chains, garnet ring, knot earrings etc. Approx weight 19.9g *£250 - £350*

538

A double stand cultured pearl necklace having a yellow metal clasp marked '14k' *£50 - £80*

539

An assortment of silver and white metal jewellery to include brooches, ring, albertina bracelet etc. Approx weight 210g *£80 - £120*





Lot 540

540

A Tiffany & Co. silver padlock clasp bracelet together with a Tiffany & Co. silver heart pendant with an additional key shaped fob *£80 - £120*

541

An early 20th century silver double Albert graduating pocket watch chain suspending a fob and miniature pocket knife *£40 - £60*



542

A gentleman's gold plated Omega Seamaster De Ville manual winding wristwatch with box. *£250 - £350*

543

A ladies gold plated Longines manual winding wristwatch with box and papers *£60 - £80*



Lot 544

544

A 19th century yellow metal fob watch with box and bow, the case marked 'k18'. Approx weight 42g *£220 - £280*

545

A ladies Buren 9ct gold cased wristwatch on a rolled gold strap together with an early 20th century ladies 9ct gold cased wristwatch on a yellow metal expanding strap marked '9ct' *£120 - £180*

546

A ladies 9ct gold Marvin Revue wristwatch. Approx weight 21.8g *£180 - £220*



547

A gentleman's stainless steel Tudor Oyster manual winding wristwatch with luminous hour and minute hands and red seconds hand. *£280 - £350*

548

A late 19th century 18ct gold cased fob watch, the dial having Roman numerals. Approx weight 51g *£400 - £600*



Lot 548

549

An early 20th century gentleman's 9ct gold cased wristwatch, the dial having luminous hands and Arabic numerals, the movement signed Zenith. *£80 - £120*



550

A gentleman's stainless steel Omega Seamaster 600 wristwatch *£250 - £350*



551

A gentleman's 18ct gold cased half hunter wristwatch, the movement signed 'The Goldsmiths & Silversmiths stores, Llandudno', the dial with seconds sub dial. *£300 - £500*

552

A ladies 9ct white gold and diamond set cocktail watch. Approx weight 25g *£300 - £400*



553

A mid 20th century ladies white metal and diamond set Hamilton cocktail watch marked '14k' *£400 - £600*



Lot 553

554

A mid-20th century ladies white metal and diamond set Talis cocktail watch marked '14k gold'. Approx weight 18.9g *£800 - £1200*

555

An early 20th century white metal half hunter pocket watch marked 0.935 together with one smaller example and a silver trombone link Albert chain. A/F *£60 - £800*

556

A George III silver pair cased verge fusee pocket watch, the movement signed Geo Robinson London. Hallmarked for London 1810, dia. 59mm A/F *£100 - £150*



Lot 544

557

A George V silver full hunter fusee pocket watch by B. Stein & Co. of Edinburgh. Hallmarked for Chester 1914, dia. 58mm *£60 - £80*



Lot 558

558

A Victorian silver centre seconds pocket chronograph, the dial with Roman numerals inside an outer track of Arabic numerals. Hallmarked for Chester 1881, dia. 57mm *£60 - £80*

559

A George III yellow metal pair cased verge fusee pocket watch, the movement signed 'Fras Putley, London', dia. 49 mm *£120 - £180*



Lot 560

Lot 562



560

A George V silver Hebdomas Patent 8 Days pocket watch, the dial with visible escapement and purple enamel numerals. Hallmarked for London (imported), 1915, dia. 47mm *£80 - £120*

561

A George III silver pair cased verge fusee pocket watch, the dial with Arabic numerals, the movement signed 'Thos Hegden, Sandwich'. Hallmarked for London 1819, dia. 57mm *£120 - £180*

562

A late 19th century French oversized white metal pocket watch, the dial having decorative raised enamelled numerals, dia. 65mm *£60 - £80*

563

A group of four silver hallmarked open face pocket watches together with a selection of keys. *£80 - £120*

564

A London Brighton & South Coast Railway silver pocket watch. Top winding with an American Waltham Watch Co. 15 jewel movement. The inner dust cover engraved 'London Brighton & South Coast Railway 753. Hallmarked for Birmingham 1912, dia. 55mm *£300 - £400*

565

A Victorian silver cased Warranted Railway Timekeeper pocket watch, the dial signed C.B. Mazzucchi, Crook. Hallmarked for Chester 1897, dia. 56.5mm *£70 - £100*

566

A group of four open face pocket watches to include an 8 day Goliath watch, a gold plated Elgin etc. £60 - £80

567

A silver 'National English Lever' pocket watch by Kendal & Dent together with a silver cased pocket watch by the Lancashire Watch Co. £50 - £80

568

A single strand cultured pearl necklace having a 14ct gold clasp, l. 46 cm £40 - £60

569

A 950 platinum and diamond solitaire ring, the round brilliant cut stone approximately 0.4ct. Approx weight 3.8g. Size M 1/2 £200 - £300



Lot 569

570

A yellow metal and red stone openwork ring stamped '585'. Approx weight 4.2g. Size P £70 - £100



Lot 570



Lot 564

571

An early 20th century yellow metal, ruby and diamond ring marked '18ct', the central oval cut ruby flanked by six diamonds. Approx weight 4.1g. Size Q. With box £150 - £250

572

A 22ct gold wedding band, approx weight 4.7g. Size P £130 - £180

573

A substantial silver single Albert chain together with a selection of fobs and a vesta case. Approx weight 188g £80 - £120

**574**

A gentleman's stainless steel Omega Electronic F 300 Hz Geneve Chronometer with day/date aperture, on an Omega stainless steel bracelet £200 - £300

575

An early 20th century silver trench watch, the dial with luminous Arabic numerals and hands. Hallmarked for London (imported) 1917, dia. 34mm ex crown £60 - £80

576

A gentleman's 9ct gold cased Avia wristwatch with textured dial and seconds sub dial £60 - £80



Lot 577

577

A gentleman's yellow metal cased Marvin wristwatch on a 9ct gold strap. Approx weight 30.9g *£180 - £250*

578

A 10.92ct natural (treated) pear cut blue sapphire stone with certificate *£20 - £30*

579

A 10.92ct natural (treated) pear cut blue sapphire stone with certificate *£20 - £30*

580

A 9.47ct natural (treated) pear cut blue sapphire stone with certificate *£20 - £30*

581

A 10.27ct natural (treated) emerald cut green emerald stone with certificate *£20 - £30*

582

A 10.67ct natural (treated) emerald cut green emerald stone with certificate *£20 - £30*

583

A 10.12ct natural (treated) emerald cut green emerald stone with certificate *£20 - £30*

584

A 11.07ct natural (treated) octagon cut blue tanzanite stone with certificate *£20 - £30*

585

A 11.02ct natural (treated) octagon cut blue tanzanite stone with certificate *£20 - £30*

586

A 11.02ct natural (treated) octagon cut blue tanzanite stone with certificate *£20 - £30*

587

A 10.56ct natural (treated) square cut red ruby stone with certificate *£20 - £30*

588

A 9.77ct natural (treated) square cut red ruby stone with certificate *£20 - £30*

589

A 10.12 natural (treated) square cut red ruby stone with certificate *£20 - £30*

590

A late 19th century gun metal cased, top winding quarter repeater pocket watch, the dial having Roman numerals, dia. 54 mm A/F *£150 - £250*

591

A yellow metal pendant in the form of a pair of entwined 'Gs', set with a central marquise cut diamond. Approx weight 4.4g, l. 2.4 cm

£300 - £500



FORTHCOMING SALE ENTRIES NOW INVITED

Vintage & Modern Wines & Spirits

Friday 5th November 2021 - Bedford Auction Centre

Antique Furniture & Collectors' Items and Jewellery

Thursday 25th November 2021 - Leamington Spa Auction Centre

Mid Century Design

Friday 19th November 2021 - Bedford Auction Centre