



LOCKE & ENGLAND

AUCTIONEERS & VALUERS

NOVEMBER SALE OF
*Antique Furniture & Collectors' items,
Jewellery, Coins and Watches*

VIEWING

Antique Furniture & Collectors' items,

Saturday 20th November – 10am - 2pm

Tuesday 23rd November – 9am - 5pm

Wednesday 24th November – 9am to 7pm,

Morning of sale from 9am

A limited number of people will be permitted in the salerooms at any one time and strict social distancing measures will be in place.

AUCTION

Antique Furniture & Collectors' items,

Thursday 25th November 2021 Commencing at 11.00am

Jewellery, Coins and Watches

Thursday 25th November 2021 Commencing after 1.00pm

LIVE INTERNET BIDDING



CATALOGUES

£5 by post, online at

www.leauction.co.uk

HAMMER PRICES - SEPTEMBER 2021

1	£190	59	£65	119	£75	229	£130	334	£50	426	£123	530	£320
2	£80	60	£60	120	£200	230	£55	336	£300	427	£100	531	£260
3	£70	61	£240	121	£340	231	£35	337	£340	428	£180	533	£75
4	£200	62	£85	122	£1100	232	£30	338	£45	429	£70	534	£505
5	£200	63	£700	123	£180	235	£50	339	£65	430	£90	535	£280
6	£160	64	£240	124	£260	236	£45	340	£480	432	£240	536	£160
7	£140	65	£100	125	£50	237	£65	341	£50	433	£95	537	£230
8	£140	66	£380	126	£200	238	£130	342	£110	434	£95	538	£50
9	£80	67	£170	127	£340	239	£50	376	£220	435	£120	539	£160
10	£85	68	£320	131	£280	240	£70	377	£45	437	£190	540	£170
11	£30	69	£140	132	£130	241	£60	378	£65	438	£95	541	£65
12	£150	70	£950	134	£90	242	£50	379	£50	439	£70	542	£480
13	£400	71	£220	135	£150	243	£65	380	£100	440	£50	543	£50
14	£50	72	£80	136	£440	244	£30	381	£30	480	£2650	544	£280
15	£140	73	£170	137	£300	245	£110	382	£100	481	£45	545	£240
16	£300	74	£120	138	£220	246	£55	383	£30	482	£400	546	£205
17	£170	75	£75	140	£60	247	£35	384	£75	483	£45	547	£260
18	£60	76	£60	141	£60	248	£70	385	£85	484	£500	548	£450
19	£240	77	£700	142	£200	249	£50	386	£45	485	£260	549	£100
20	£150	78	£110	143	£400	250	£55	387	£50	486	£230	550	£300
21	£420	79	£170	144	£200	251	£80	388	£35	487	£20	551	£550
22	£75	80	£320	145	£120	252	£100	389	£40	488	£500	552	£260
23	£60	81	£130	146	£120	253	£40	390	£30	489	£400	555	£100
24	£85	82	£180	147	£130	254	£200	391	£30	490	£45	556	£80
25	£130	83	£480	148	£250	255	£50	392	£50	491	£500	557	£70
26	£900	84	£260	149	£100	257	£90	393	£20	492	£140	558	£70
27	£260	85	£460	150	£600	258	£240	394	£90	493	£260	559	£110
28	£95	87	£70	151	£180	259	£50	395	£20	494	£150	560	£85
29	£80	88	£240	152	£160	260	£80	396	£20	495	£140	561	£100
30	£260	89	£240	153	£200	261	£150	397	£20	500	£110	562	£40
31	£100	90	£1200	154	£50	300	£180	398	£45	501	£100	563	£130
32	£110	91	£60	155	£80	301	£85	399	£22	502	£3800	564	£200
33	£95	92	£55	156	£80	302	£150	400	£130	503	£440	565	£60
34	£170	93	£100	159	£380	303	£80	401	£170	504	£122	566	£60
35	£260	94	£280	161	£150	304	£130	402	£150	505	£340	567	£60
36	£50	95	£50	162	£1100	306	£22	403	£90	506	£55	568	£45
37	£55	97	£160	163	£220	307	£240	404	£460	507	£170	569	£200
38	£150	98	£65	165	£5000	308	£140	405	£190	509	£200	570	£70
39	£100	99	£70	200	£240	309	£70	406	£340	510	£270	571	£420
40	£100	100	£50	202	£30	310	£130	407	£1600	511	£305	572	£140
41	£100	101	£50	204	£140	311	£35	408	£160	512	£300	573	£90
42	£55	102	£550	205	£20	312	£220	409	£80	513	£110	574	£190
43	£500	103	£300	207	£80	313	£250	410	£70	514	£120	575	£120
44	£45	104	£50	208	£60	314	£85	411	£92	515	£160	576	£70
45	£40	105	£65	209	£140	315	£65	412	£40	516	£95	577	£280
46	£50	106	£110	210	£200	316	£65	413	£80	517	£110	578	£30
47	£150	107	£180	211	£180	317	£45	414	£80	518	£100	579	£30
48	£150	108	£40	212	£240	318	£35	415	£50	519	£200	580	£20
49	£1600	109	£190	213	£50	319	£4600	416	£85	520	£600	581	£20
50	£45	110	£120	214	£50	320	£150	417	£90	521	£3500	582	£20
51	£120	111	£100	215	£95	321	£650	418	£130	522	£282	583	£20
52	£140	112	£80	216	£100	322	£100	419	£170	523	£280	584	£20
53	£75	113	£80	217	£50	325	£85	420	£70	524	£100	585	£20
54	£110	114	£420	218	£50	326	£80	421	£120	525	£340	586	£20
55	£55	115	£400	219	£30	329	£160	422	£60	526	£60	588	£20
56	£380	116	£650	220	£400	331	£170	423	£90	527	£110	589	£20
57	£120	117	£100	227	£60	332	£80	424	£30	528	£90	590	£140
58	£65	118	£170	228	£70	333	£160	425	£95	529	£200	591	£290



TO BE SOLD BY AUCTION

Thursday 9th December 2021

Commencing at 10.00am

Sporting Guns & Antique Arms

**Viewing Tuesday prior, 12.00pm - 8.00pm, Wednesday prior, 10.00am - 8.00pm
Morning of Sale 9.00am - 12.45pm**

Entries invited include: English & Continental Shotguns, Sporting & Target Rifles, Vintage & Modern Air Weapons, Flintlocks, Percussion & Pinfire Weapons, Collectors Cartridges, Edged Weapons, Cases, Magazines & Shooting equipment.



SOUTHAMS
Sporting Guns & Antique Arms

Southams Administration Office

24 Newnham Street, Bedford, Bedfordshire MK40 3JR
01234 269082 or guns@southamsauction.co.uk

www.southamsauction.co.uk

Jewellery & Watches



Jewellery & Watches

500

Three two tone 9ct gold rings by Clogau together with a pair of similar 9ct gold Clogau earrings. Approx weight 15.7g *£200 - £300*

501

A group of seven 9ct gold dress rings set with various stones. Approx weight 23g *£250 - £350*

502

A group of seven 9ct yellow and white gold dress rings set with various stones. Approx weight 22.4g *£250 - £350*



Lot 506

506

An 18ct gold diamond solitaire ring, the round brilliant cut stone approximately 0.75ct. Approx weight 3.1g. Size L. *£450 - £650*



Lot 503

503

An 18ct gold tanzanite and diamond ring having cluster set shoulders together with one other 18ct gold and tanzanite ring. Approx weight 7.6g *£170 - £200*



Lot 504

504

A yellow metal, aquamarine and diamond ring, the baguette cut aquamarine flanked by six diamonds. Approx weight 5.6g. Size L. *£400 - £600*

505

An 18ct gold, emerald and diamond cluster ring. The marquise cut emerald surrounded by sixteen stones. Approx weight 4.5g. Size M *£300 - £500*



Lot 505



507

An 18ct gold diamond trilogy ring the three round brilliant cut stones totalling approximately 0.75ct. Approx weight 3.3g. Size J. *£200 - £300*

508

An early 20th century 18ct gold, diamond and ruby ring (missing one stone). Approx weight 2.9g *£70 - £100*



Lot 509

509

A Victorian 18ct gold, diamond and sapphire gypsy style ring, the central old cut stone approximately 0.15ct. Approx weight 3.9g. Size O. *£100 - £150*

510

A yellow metal, diamond and sapphire ring marked '18ct & PT' together with an unmarked yellow metal ring set with five old cut diamonds. Approx weights 1.7g & 1.9g *£80 - £120*



Lot 514

511

A yellow metal and diamond solitaire ring marked '18ct', the approximately 0.25ct stone in a raised setting. Approx weight 3.4g. Size L *£120 - £160*



Lot 512

514

A group of three gold and yellow metal white stone set solitaire rings. Approx weight 13.5g *£200 - £300*

515

An 18ct gold and diamond crossover ring together with two yellow metal band rings marked 18ct'. Approx weight 11.5g *£280 - £350*

516

A group of five 9ct gold, yellow metal and white metal rings to include a garnet dress ring, a pearl cluster ring and a faceted band marked 'platinum'. Approx weight 15.3g *£200 - £250*

512

A yellow metal and diamond ring marked '18ct', the five stones in an half hoop shaped setting. Approx weight 3g. Size O *£100 - £200*

517

Three 18ct gold dress rings together with a 14ct gold dress ring. Approx weights 16.5g & 3.6g *£300 - £400*

518

A group of six 9ct and 10ct gold dress rings set with various stones. Approx weight 23.6g *£250 - £350*

519

A group of six 9ct, 10ct and yellow metal dress rings set with various stones. Approx weight 25.1g *£250 - £350*

520

A group of six 9ct and 10ct yellow and white gold dress rings set with various stones. Approx weight 23.8g *£250 - £350*



Lot 513

513

Two 18ct gold rings together with a 22ct gold wedding band and a yellow and white metal eternity ring. Approx weight 16.15g *£300 - £500*



Lot 515

521

Two 18ct gold dress rings together with a yellow metal, sapphire and diamond ring marked 'k18'. Approx weight 19g *£350 - £450*

522

A group of six 9ct and 10ct gold dress rings set with various stones. Approx weight 19.6g *£250 - £350*

523

A group of six 9ct, 10ct and white metal dress rings set with various stones. Approx weight 21.1g *£250 - £350*

524

A group of six 9ct and 10ct gold dress rings set with various stones. Approx weight 22.4g *£250 - £350*

525

A group of twenty silver and white metal dress rings set with various stones. Approx weight 169g *£70 - £100*

526

A group of five rings to include a yellow metal mourning ring, two 18ct gold and diamond rings, a yellow metal cameo ring marked '9ct' and one other yellow metal, diamond and sapphire ring. Approx weight 14.4g *£300 - £500*

527

An 18ct gold wedding band. Approx weight 3.8g *£110 - £140*

528

A 22ct gold wedding band. Approx weight 5.6g *£180 - £220*



530

A 9ct gold ring set with a Queen Victoria full sovereign dated 1899. Approx weight 16.7g. Size T *£350 - £450*



Lot 531

531

A 19th century and later yellow metal, diamond and emerald ring, the rose cut stones set in two vertical lines with an emerald at each end. Approx weight 4.2g. Size R *£100 - £200*

532

A Victorian 12ct gold signet ring having engraved initials. Approx weight 1g. Size S. A/F *£30 - £40*

529

A Victorian 18ct gold and diamond ring, the three stones in an engraved setting. Approx weight 2.6g. Size J *£70 - £90*



Lot 521



533

A platinum and diamond crossover ring, the two round brilliant cut main stones totalling approximately 1.9ct. Approx weight 5.3g. Size R *£1800 - £2500*



Lot 533

538

A white metal and diamond crossover ring marked 'Plat', the three round brilliant cut stones totalling approximately 0.7ct. Approx weight 4.4g. Size N *£400 - £600*



Lot 538



Lot 534

539

Three 9ct gold dress rings together with a yellow metal and opal ring marked '14k'. Approx weights 12.4g & 4.2g *£180 - £250*

540

Two yellow metal and turquoise style rings, one marked '18ct'. Approx weight 13.3g. Size P *£180 - £250*

534

An 18ct gold, aquamarine and diamond cluster ring. Approx weight 4.4g. Size N *£300 - £500*

541

A yellow metal wedding band together with a silver wedding band. Approx weights 6.8g & 2.7g *£150 - £250*

542

A men's 9ct gold and onyx signet ring. Approx weight 13.7g. Size Z *£120 - £160*



Lot 535

535

An 18ct, garnet and diamond cluster ring. Approx weight 5g. Size N *£200 - £300*



Lot 536



Lot 542

536

An 18ct gold, yellow sapphire and diamond cluster ring. The central stone measuring approximately 8.2mm x 6mm. Approx weight 4.2g. Size N *£400 - £600*

542

A men's 9ct gold and onyx signet ring. Approx weight 13.7g. Size Z *£120 - £160*

543

An 18ct gold, sapphire and diamond cluster ring. Approx weight 3.7g. Size L *£400 - £600*

537

An 18ct gold, opal and diamond cluster ring. Approx weight 4.8g. Size M *£250 - £350*



Lot 537



Lot 543

544

A 9ct gold seal ring having heraldic engraving. Approx weight 3.3g. Size G *£50 - £80*



Lot 545

545

An 18ct gold and diamond trilogy ring, the three illusion set stones totaling approximately 0.15ct. Approx weight 3g. Size M 1/2 *£80 - £120*



Lot 546

546

A yellow metal and diamond solitaire ring, the central round brilliant cut stone approximately 0.4ct. Approx weight 2.5g. Size O *£200 - £300*

549

A collection of 9ct gold and yellow metal jewellery to include a cameo pendant marked '750k' and a selection of earrings. Approx weight 16.5g *£180 - £250*



Lot 554

550

A 9ct Clogau gold pendant together with two other silver Clogau pendants. Approx weight (of the gold pendant) 10.1g *£150 - £250*

551

An assortment of 9ct gold items to include three rings, a chain and a pair of earrings. Approx weight 18.2g *£220 - £280*

552

A selection of jewellery to include a 15ct gold bar brooch, a 9ct gold pendant, a 9ct gold gemstone bracelet and a 9ct gold ladies watch. Approx weight 24.7g *£220 - £280*

553

An 18ct white gold and diamond set bracelet. Approx weight 25.7g *£600 - £800*



547

An assortment of 9ct gold chains and a bracelet. Approx weight 67.5g *£800 - £1000*

548

A collection of 9ct gold and yellow metal earrings to include amethyst drop earrings, blue topaz etc. Approx weight 23.7g *£250 - £350*

554

A 9ct gold ingot pendant on chain. Approx weight 18.8g *£180 - £220*

555

A pair of yellow metal and diamond stud earrings marked '18ct'. Total diamond weight approximately 0.5ct *£200 - £300*



Lot 566



Lot 556

556

A pair of 9ct gold textured cufflink's.
Approx weight 9.2g *£120 - £160*

557

An 18ct gold propelling pencil by Sampson Mordan & Co. Together with a 9ct gold pencil and a yellow metal chain marked '9c' Approx weight 63g *£600 - £800*

558

A 9ct gold, diamond and sapphire necklace. Approx weight 6g *£70 - £100*

559

A 9ct gold fringe necklace. Approx weight 23.6g *£300 - £500*

560

A pair of yellow metal, diamond and emerald earrings marked '14k'. Approx weight 4.4g *£80 - £100*

561

A selection of 9ct gold and yellow metal jewellery to include a tie pin, dress stud, brooch etc. Approx weight 14.4g *£150 - £250*

562

A set of yellow metal and amber beads. Approx weight 22.7g *£50 - £80*

563

A selection of 9ct gold and yellow metal jewellery to include rings, pendants, earrings etc. Approx weight 19.2g *£140 - £180*



Lot 557

564

An assortment of 9ct gold and yellow metal earrings to include opal, faux pearl, blue stones etc. Approx weight 24g *£200 - £300*

565

A selection of 9ct gold jewellery together with a 24ct gold proof coin. Approx weight 8.6g (excluding the coin) *£100 - £150*

566

A men's 9ct gold curb link bracelet. Approx weight 62g, 1.21 cm *£1150 - £1350*

567

An 18ct gold, diamond and ruby set brooch by Kutichinsky. Approx weight 36.6g *£2000 - £3000*

568

A Victorian yellow metal, blue paste and seed pearl bar brooch. Approx weight 5.1g *£50 - £80*



Lot 559



Lot 567



Lot 572

569

An 18ct gold and diamond pendant, the central pearl cut stone approximately 0.75ct. Total diamond weight approximately 1ct
£1500 - £2500



572

A pair of 9ct gold, opal and seed pearl earrings together with one other set of 9ct gold opal earrings. Approx weight 5.6g
£100 - £150

570

A 9ct gold African animal bracelet together with a pair of similar earrings.
 Approx weight 22g *£280 - £350*



Lot 573

571

A 9ct gold four bar gate link bracelet together with a 9ct rose gold curb bracelet with additional heart clasp. Approx weight 35.3g *£450 - £550*

573

A 9ct gold double shackle bracelet. Approx weight 38.3g
£450 - £600



Lot 571



Lot 574

574

A 9ct gold and diamond set openwork design bracelet. Approx weight 20g
£300 - £500





Lot 575

575

A 9ct gold, diamond and sapphire bracelet together with one other 9ct gold bracelet.
Approx weight 26.9g £300 - £500

578

Hans Hansen for Georg Jensen, a silver bracelet. Hallmarked for London 1999. Approx weight 80.7g, l. 19.5 cm £150 - £250

576

A 9ct gold and lapis lazuli bracelet together with a similar necklace. £100 - £200



577

A double strand cultured pearl necklace having a 9ct gold clasp together with a matching bracelet and two sets of pearl earrings £300 - £400



Lot 579

579

David Andersen, a large enameled silver pendant of abstract design. Approx weight 43.8g l. 9.5 cm £100 - £200

580

A men's silver curb link bracelet. Approx weight 93.5g, l. 24 cm £60 - £80



Lot 578

581

A yellow metal, opal, diamond and garnet pendant in the form of a seahorse, suspended from a yellow metal chain marked '9k'. Approx weight 7.2g
£120 - £180



582

An Australian 1/20 Oz 9999 gold five dollar coin dated 1997, set in an 18ct gold and opal mount and suspended from a yellow metal chain marked '18ct'. Approx weight 15.5g
£400 - £600



Lot 583

583

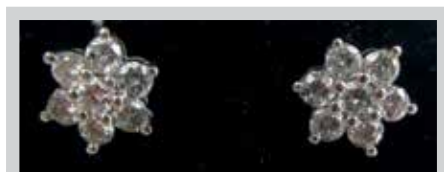
An Iranian Pahlavi gold coin in a yellow metal mount with chain. Approx weight 14.1g
£350 - £450



Lot 585

585

A late Victorian yellow metal, turquoise, seed pearl and pink stone brooch together with an Edwardian yellow metal, seed pearl and amethyst brooch. Approx weight 7g
£120 - £160



586

A pair of 950 platinum and diamond cluster earrings. Total carat weight approximately 1ct
£400 - £600

584

A George V half sovereign dated 1926
£120 - £160



Lot 587

587

A pair of white metal and diamond stud earrings. Total carat weight approximately 1ct
£1000 - £1500

588

A yellow metal and diamond pendant marked '18k', the round brilliant cut stone approximately 0.25ct. Approx weight 2g
£120 - £180

589

An early 20th century yellow metal fancy link double albert chain marked '9ct'. Approx weight 9.3g
£140 - £180

590

A 9ct gold mounted carved shell cameo. Approx weight 9.4g
£50 - £80

591

A 14ct gold cameo bracelet together with a pair of cameo earrings and one other 14ct gold cameo pendant on a 18ct gold chain. Approx weight 18.1g
£200 - £300

592

A boxed pair of yellow metal, seed pearl and turquoise stone drop earrings. Approx weight 4g
£70 - £100



Lot 593

593

A gentlemen's 9ct gold cased Jaeger LeCoultre wristwatch with central date ring. A/F
£400 - £600



Lot 594

594

A gentlemen's Omega electronic F300Hz Seamaster Chronometer. The dial with date aperture in a gold plated case.
£150 - £250



Lot 589

595

A ladies Tag Heuer Link stainless steel wristwatch having a pearlescent dial and a diamond set bezel. £300 - £500

596

A ladies 9ct gold Jaeger LeCoultre wristwatch. Approx weight 19g £170 - £220

597

An Art Deco ladies 9ct gold cased Rolex wristwatch, the dial having Roman numerals and baton markers. A/F £50 - £100

598

A ladies yellow metal cased Audax wristwatch together with a ladies 18ct gold Stayte wristwatch on a 9ct gold strap. Approx weight 24.3g £150 - £200



Lot 595

NOTES
